



USM

UNIVERSITY OF SANTA MONICA

## STUDENT PARKING INFORMATION OVERVIEW • 2017/18

USM is located in a residential neighborhood, and maintaining harmonious relationships with our neighbors is very important to us. You can assist us in this by carefully reading and following the guidelines we've provided below for your participation at USM.

### Where to Park

**Option 1: Union Bank Parking Garage (175 Spaces);** please also see the attached flyer, *Directions for Using the Union Bank Parking Garage*. **Please Note: USM does not have enough parking garage spaces for all of our students. When available parking is full, students will need to locate parking on the street.** USM representatives will be at the entrance to the Union Bank Parking Garage to open the gate for the first 175 cars starting at 6:15 p.m. on Friday evening of the class weekend. **Once you have parked your car, please proceed to the lobby of the USM Center, where you can sign for a parking pass for your use throughout the year.** Note: All students who wish to receive a parking pass will be able to do so.

This parking pass will provide access to the UNION BANK parking garage at 2001 Wilshire Blvd., from 6:00 p.m. on Friday evening through the end of class on Sunday evening (please see the map and directions on the back of this form). Once the available 175 parking spaces are filled, it will be necessary for you to park on the streets around USM.

**There is no charge for the use of the Union Bank garage with this pass; however, we do request that you return the pass in the event that you no longer need it. There will be a \$35 charge if you need to replace a lost parking pass or if your parking pass is not returned to USM at the end of the academic year.**

**Option 2: On-Street Parking;** please also see the attached flyer, *Street Parking Information*. On-street parking around the USM Center is limited. If you do park on the street, be sure to read the parking signs on the streets **very carefully**, for these regulations change frequently. In many areas, there is residential permit parking only. Stay away from those spots! In other areas, there are signs, which clearly tell you what days and times parking is restricted. The key here is simply to read the parking signs on the street and follow precisely what is written. May the Parking Angels be with you!

**Please note: USM and AMPCO Parking assume no responsibility for loss through fire, theft, collision, or otherwise to students' cars or contents.**

### Where Not to Park

Please do not park in any of the spaces in the parking lots behind the USM Center. These are reserved for building personnel only. **Unauthorized vehicles will be towed at the owner's expense.** We do not want this to happen, and we're sure you don't either.

### What To Do If Your Car Is Towed

Call Pacific Towing Service at (310) 450-0926. They will give you instructions for reclaiming your car.

### How Much You'll Have to Pay

Cost of towing per vehicle	\$180.00
Cost of storage per day	55.00
TOTAL (Towing and first day storage)	\$235.00

## MAP & DIRECTIONS TO USM EVENTS

The University of Santa Monica's administrative offices and classrooms are located at 2107 Wilshire Boulevard in Santa Monica, California.

### From LAX Airport

- Take the San Diego Freeway (405) North to the Santa Monica Freeway (10) West.
- Take the Santa Monica Freeway (10) West and get off at the Cloverfield / 26th Street exit.
- Turn right on Cloverfield / 26th Street and proceed North on 26th Street toward Wilshire Boulevard.
- Turn left at Wilshire Blvd.

### From the Santa Barbara area

- Take the Ventura Freeway (101) South to the San Diego Freeway (405).
- Take the San Diego Freeway (405) South to the Wilshire Blvd. West exit (Exit 55C).
- Turn right onto Wilshire Blvd.

### From the San Bernardino area

- Take the I-10 West to Santa Monica.
- Take the Cloverfield / 26th Street exit.
- Turn right on Cloverfield / 26th Street and proceed North on 26th Street toward Wilshire Boulevard.
- Turn left at Wilshire Blvd.

USM is on the corner of 21st & Wilshire on the right-hand side of the street.

### PARKING INFORMATION • 2017/18

Students have the option to use the Union Bank Parking Garage at 2001 Wilshire Blvd., one block west of USM, beginning at 6:00 p.m. on Friday evening through Sunday evening.

Note: Students are to park only in VISITOR and NON-RESERVED spaces. If these spaces are full, then students need to locate street parking.

Street parking in the residential areas around the University is restricted. Parking regulations as indicated by street signage must be observed.

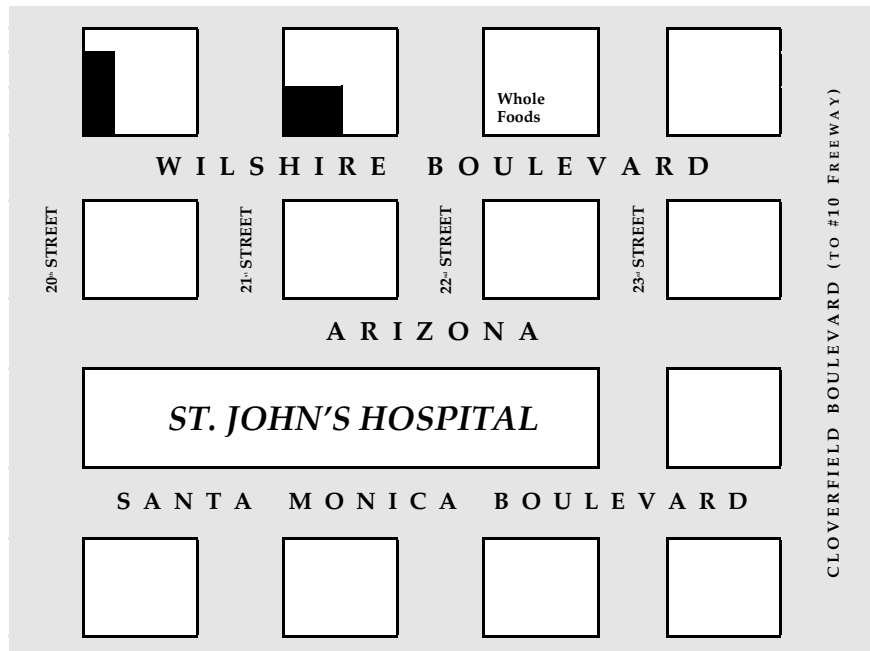
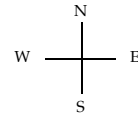
#### No participant parking is allowed in the following areas:

*Private driveways.* The neighbors and homeowners on the residential streets around the University of Santa Monica will have your car ticketed and towed if you block their driveways. Always be aware of all posted No Parking times and Permit Only areas.

*The 2101 Wilshire Blvd. parking lots* located behind the USM building in the alley between 21<sup>st</sup> and 22<sup>nd</sup> Streets. This includes weekends, as these lots are used on Saturdays and Sundays by building staff. Your car will be towed if you park in these lots.

Union Bank of California  
2001 Wilshire Parking  
Garage  
(enter on 20<sup>th</sup> Street)

University of Santa Monica  
2107 Wilshire Boulevard  
Santa Monica, CA



UNIVERSITY OF SANTA MONICA

DIRECTIONS FOR USING UNION BANK PARKING GARAGE

These directions are provided to assist you in using the Union Bank/AMPCO Parking garage safely and easily. Please read them entirely before parking your car (see diagram on the back). We recommend you keep them in your car for future reference.

- Your Parking Card is programmed so that you may use the garage only on your class weekends. Please keep the card away from magnetic/electronic devices, away from heat, and out of the sun.
- Do not write in ink on the card. If you want to affix your name to the parking card, please use a removable sticker.
- On the back of the card, there are imprinted numbers. Hold these numbers in front of the electronic beam on the black scanner boxes to activate the gates.
- **Please refer to the “Keep In Car for Reference” form for information on where to park in the parking garage.** The parking garage height clearance is 6 ft. 8 in.; please make a note of it. **Trucks, vans, or SUVs with roof racks are not allowed to enter the garage.**

**To Enter the Parking Garage**

- 1) At the attendant booth, an “arm” may block access to the IN driveway. **IMPORTANT—EVEN IF THE ARM IS UP—PASS YOUR CARD NUMBERS IN FRONT OF ENTRANCE SCANNER. Your card must be scanned upon entering to allow you to exit later.**
- 2) Drive in the right lane down the slope. If the metal gate is open, simply drive into the garage. (See separate flyer “Keep In Car For Reference” for information regarding available parking spaces.)
- 3) If the metal gate is down, stop your car and walk back up the slope. On the left wall is a yellow & black Metal Gate Scanner box. Pass your card (number side) in front of this scanner box. The metal gate will open. **Important: Only one car is to enter per card swipe.** Otherwise, the gate may close on the second or third car trying to get in. Get into your car and drive into the garage. **Note: It is important to park ONLY in spaces described in the “Keep In Your Car For Reference” flyer.** Note: building employees often come in on the weekend and your car may get towed if you parked your car in a non-approved space.
- 4) Walk to the elevator station at the center of the garage. Push the button for lobby.
- 5) When you leave the elevator area, turn right. Exit the building through the rear glass doors. Once outside, turn right again. Walk east down the alley to 21<sup>st</sup> St. and the USM building.

**To Return to Your Car and to Exit the Parking Garage**

- 1) Enter the Union Bank building through the same rear glass doors that lead to the alley. In the evenings, these doors may be locked. Pass your card in front of the Door Entry Scanner box to the left (west) of the doors to unlock them.
- 2) Take the elevator to the level where your car is parked.
- 3) As you exit the garage, if the metal gate is open, simply drive up to the ground level. If the gate is down, drive up to it and stop. It will open automatically so you may exit.
- 4) **At the exit “arm,” pass your card in front of the Exit Scanner to raise the arm. Even if the “arm” is up, please pass your card in front of the Exit Scanner. If you do not, your card may not work when you attempt to re-enter the next day.**

**NOTE:**

- A guard is on duty in the building lobby on Friday evening and Saturday until 4 p.m., but not on Sunday. You may exit via the stairs, but no one can enter via the stairs.
- Please do not leave any valuables in the car. USM and/or AMPCO Parking assume no responsibility in the event of theft, car break-ins, loss, or damage.

WILSHIRE BOULEVARD

USM BUILDING

21<sup>ST</sup> STREET

UNION BANK BUILDING

Elevator

Rear

Glass

20<sup>TH</sup> STREET

←----- ALLEY TO USM

Entrance Scanner

Attendant

←  
Parking  
Garage  
Driveway



Exit Scanner

Metal Gate Scanner  
(Walk to this scanner)

ABOVE-GROUND SPACES  
(Sunday Parking ONLY)

Spiral down to  
lower parking  
levels

Metal Gate

Be careful. Use this  
mirror to watch for  
traffic.

CALIFORNIA STREET

## STREET PARKING INFORMATION • 2017/18

Please use the information below to assist you with locating street parking. Besides the streets listed below, virtually all other streets in the area have two-hour limits and/or permits are required.

**Students are responsible for their own parking. Please read and follow all street parking signs.**

### **All Day Street Parking is Available on these Streets:**

- **20<sup>th</sup> through 24<sup>th</sup> Streets, north of Idaho Ave.** (between Idaho and Montana Ave.)

(Note: Students are responsible for reading and following all street parking signs. Signs may change without notice.)

### **Two-Hour Parking Only – Without Permit:**

- **California Ave.:** one block north of USM/Wilshire Blvd.
- **Washington Ave.:** two blocks north of USM/Wilshire Blvd.
- **Idaho Ave.:** three blocks north of USM/Wilshire Blvd.
- **20<sup>th</sup> through 24<sup>th</sup> Streets:** between Wilshire Blvd. and Idaho Ave.

### **Local Street Cleaning Info:**

- **All Streets in the area:** Alternate side of the street: Tuesday and Wednesday

Please do not park in any of the spaces in the parking lots behind the USM Center. These are reserved for building personnel only. **Unauthorized vehicles will be towed at the owner's expense.** We do not want this to happen, and we're sure you don't either.

### **What To Do If Your Car Is Towed**

Call Pacific Towing Service at (310) 450-0926. They will give you instructions for reclaiming your car.

### **How Much You'll Have to Pay**

Cost of towing per vehicle	\$180.00
Cost of storage per day	<u>55.00</u>
TOTAL (Towing and first day storage)	\$235.00

## **USM Parking Pass:**

With the USM Parking Pass, there is no charge for the use of the Union Bank Garage during class weekends. However, there are a limited number of parking spaces for students in the Union Bank Garage. **Having a parking pass does not guarantee an available parking space on class weekends.** Spaces are filled on a first-come, first-served basis each day of class. Street parking is to be utilized when the parking garage is full.

### **Access to the Parking Garage:**

The parking pass will provide access to the parking garage from 6:15 p.m. on Friday evening through Sunday morning during the class weekend.

### **Where to park in the garage:**

#### **LEVEL ONE**

Visitor Parking Spaces: 24 single parking spaces

Non-Reserved Spaces (NO signage above spaces): 24 spaces

Handicap Spaces: 3 handicap spaces available for students with proper permits/stickers

#### **LEVEL TWO**

Non-Reserved Spaces (NO signage above spaces): 46 spaces

#### **LEVEL THREE**

Non-Reserved Spaces (NO signage above spaces): 60 spaces

**SUNDAY ONLY:** Top Level: Bank Customer ONLY 20 min Limit: 13 spaces

**You must scan your parking pass when you enter and exit the garage. The Union Bank garage cards are programmed to track cars in and out. If you do not scan your card, you may not be able to enter or exit later. Please, do not follow other cars into the structure or allow others to follow you!**

**Do NOT park in any 20-minute BANK spaces on FRIDAY & SATURDAY and do NOT park in any other RESERVED spaces, or your car may be towed.** If your car is towed, all towing and related expenses are your responsibility. Office workers often come in on Saturday or Sunday, and they need access to their reserved parking spaces.

**If the above Parking Spaces are full, please exit the garage and find a parking space on the street.** Please refer to the Street Parking Information in the *Student Parking Information Overview* • 2015/16.

**Do not leave any valuables in the car.** USM and/or AMPCO Parking assume no responsibility in the event of theft, car break-ins, loss, or damage.

I have read the information provided above and will follow these guidelines for class weekends. **I understand that I will be charged \$35 if my parking pass is not returned to USM at the end of the academic year, or if it needs to be replaced due to loss or damage.**